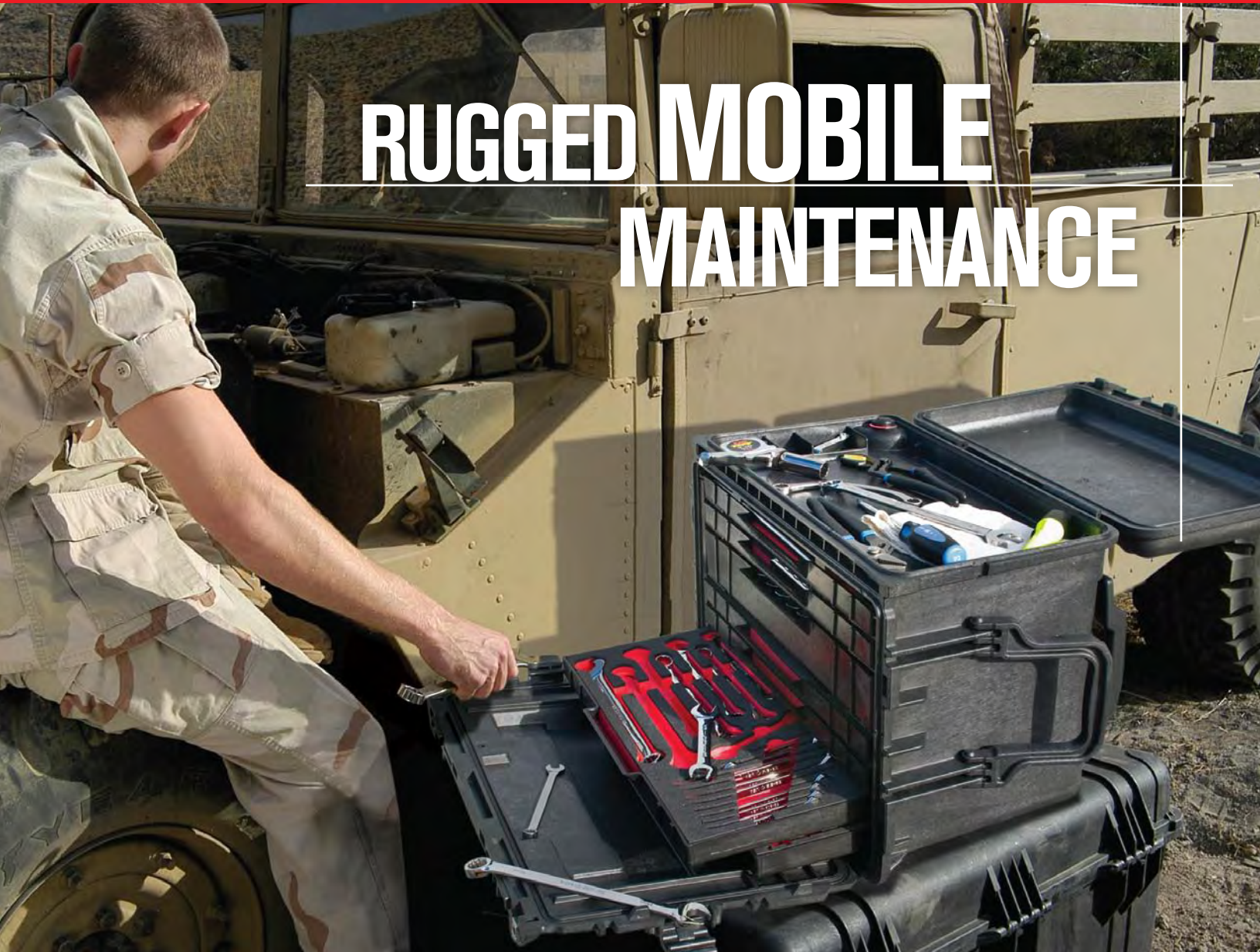


**PELICAN™**

# RUGGED MOBILE MAINTENANCE



**> INTRODUCING THE 0450 MOBILE TOOL CHEST**



# > 0450 MOBILE TOOL CHEST

The U.S. Army tasked Pelican with building a mobile tool chest to house tools for its maintenance engineers. Rapid deployment to harsh environments is common; arriving with your tools intact and fully functional is mission critical.

Over a two year period of intensive design, research and testing,

Pelican Products built the world's toughest mobile tool chest for use by the U.S. Armed Services. Over 70 tests were required, including water submersion, extreme temperature tests and drop tests from five feet fully loaded. The 0450 passed all of them.

The 0450 Mobile Tool Chest: now ready for civilian use.



## 1: HEAVY DUTY BUTTRESS HINGES

Stainless steel hinge pins provide extra protection from corrosion. Raised ribs are designed to stop the lid at 180 degrees when opened to serve as a work space, supporting up to 50 lbs.

## 2: AUTO PRESSURE EQ VALVES



The 0450 has two built-in Automatic Pressure Equalization Valves: one for the top lid and the second for the main compartment. They make opening the case easier after

altitude changes by balancing the interior pressure with the ambient pressure.



## 3: TWO WAY HANDLES

The 0450 case can be lifted from the tool chest position or the transport position.



## 4: STABLE, WIDE TRACK MOBILITY

The 0450 has 2" polyurethane wheels for optimum load distribution over soft terrain. By locating them on the back of the chest, they offer a wide, stable track. This also leaves the front of the chest clear of wheel obstructions, creating more usable drawer space within the case.



## 5: REMOVABLE DRAWERS

The 0450 Mobile Tool Chest is available with removable shallow and deep drawers constructed of the same indestructible material as the case.



## 6: HYBRID DOUBLE THROW BUTTERFLY LATCHES

The 0450 incorporates the same robust design of Pelican's patented Double-Throw Latch but has been upgraded with a metal butterfly compression latch.

\* Foam and tools not included

7



**7: GRADUATED DEFLECTOR RIBS**

Deflector ribs protect the hinges and latches from shipping damage by diverting the energy away from the case. They are rounded off to make rolling the 0450 onto its back easy when it's ready for transport.

8



**8: SECURE STACK DESIGN**

Extra deep pockets mate with the foot blocks on the bottom of the 0450 Mobile Tool Chest. This "Block-In-Pocket" design locks the cases together to prevent lateral movement.

9



**9: TROLLEY HANDLE AND WHEEL SYSTEM**

Using simple fasteners, the trolley handle and wheels can be replaced in the field. This also assures easy cleaning should debris become lodged within the parts.

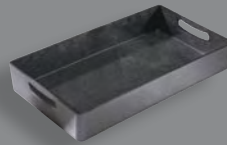
**> CONFIGURATIONS**



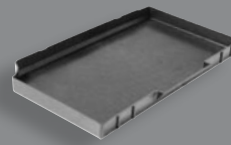
■ CAT. NO. 450WD  
Includes 6 Shallow Drawers, 1 Deep Drawer, and 1 Top Tray.

■ CAT. NO. 0450ND  
Includes drawer glides to fit multiple combinations of deep and shallow drawers.

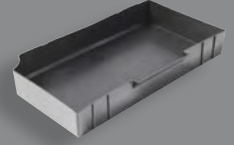
Drawers can also be purchased separately.



■ CAT. NO. 0455TT



■ CAT. NO. 0455DS

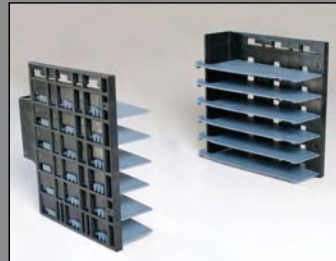


■ CAT. NO. 0455DD

**> DRAWER ASSEMBLY**

**CUSTOMIZE YOUR 0450**

The modular design of the 0450 Mobile Tool Chest allows you to adjust the number and position of glides to accommodate a multitude of drawer configurations.



Adjustable glides allow for multiple drawer configurations.



Choose shallow drawers, deep drawers or mix and match

0450 DRAWER CONFIGURATIONS	
DEEP	SHALLOW
3	2
4	0
2	4
1	6
0	8

Multiple combinations available

**> TOOL CONTROL**

**TOOL PALLET SOLUTION**

Pelican's versatile nylon elastic strap system fits any tool and keeps it firmly in place during transport. Tool pallets are available in vertical or horizontal configurations.



■ CAT. NO. 0457  
Horizontal tool pallet



■ CAT. NO. 0456  
Vertical tool pallet

**CUSTOM FOAM SOLUTION**

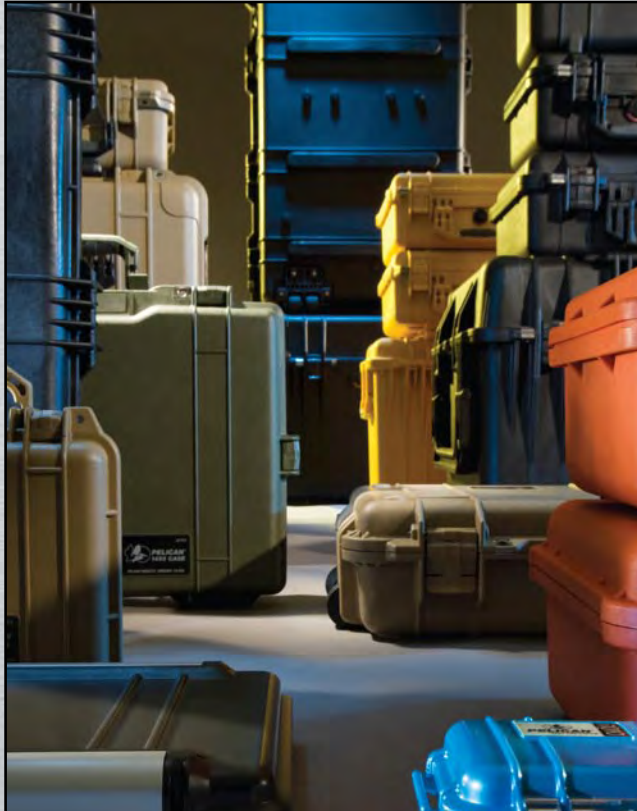
Secure and protect your valuables with a customized foam solution.

Call for more details at 1-866-273-5422 (minimum quantities may apply).



## > 0450 MOBILE TOOL CHEST SPECIFICATIONS

INTERIOR DIMENSIONS (L X W X D)	EXTERIOR DIMENSIONS (L X W X D)	WEIGHT WITHOUT DRAWERS	WEIGHT WITH DRAWERS	COLOUR	CERTIFICATES
20.56" x 10.97" x 12.65" (52.2 x 27.9 x 32.1 cm)	23.95" x 14.75" x 17.95" (60.8 x 37.5 x 45.6 cm)	33 lbs. (14.97 kg)	41.5 lbs. (18.82 kg)	■	MIL-STD-810F



VISIT [WWW.PELICAN.CA](http://WWW.PELICAN.CA) TO SEE OUR FULL LINE OF CASE AND LIGHTING SOLUTIONS

### PELICAN LEGENDARY LIFETIME GUARANTEE OF EXCELLENCE

Pelican guarantees its products for a lifetime against breakage or defects in workmanship. Pelican cases are guaranteed to be watertight to a depth of 3.3 feet (1 meter) for 30 minutes (IP 67) unless otherwise stated if properly closed with undamaged o-ring in place. Pelican's liability is limited to the case and not its contents. This guarantee does not cover the lamp or batteries (rechargeable or alkaline) for lights. Any liability, either expressed or implied, is limited to replacement of the product. This guarantee is void if the Pelican™ product has been abused beyond normal and sensible wear and tear.

This guarantee does not cover shark bite, bear attack or damage caused by children under five.



CANADA	U.S.A.
10221-184th Street	23215 Early Avenue
Edmonton, Alberta T5S 2J4	Torrance, CA 90505
Toll Free: (866) 273-5422	Tel: (800) 473-5422
Tel: (780) 481-6076	Fax: (310) 326-3311
Fax: (780) 481-9586	<a href="http://www.Pelican.com">www.Pelican.com</a>
<a href="http://www.Pelican.ca">www.Pelican.ca</a>	

### KO-HEN ELECTRONICS SUPPLY LTD.

6022 67A Street Red Deer AB, T4P 3E8  
 Ph: 403.346.3733 Fax: 403.340.3890  
 E: [sales@kohen.ca](mailto:sales@kohen.ca) [www.kohen.ca](http://www.kohen.ca)